

Ag Forecast Set For Five Locations in 2020



Jeffrey Dorfman, the state fiscal economist for Georgia and a professor at the UGA College of Agricultural and Environmental Sciences (CAES), will serve as the key-note speaker for four of the five locations during the 2020 Georgia Ag Forecast seminar series set for Jan. 21 through Jan. 31.

"Right now, economic data is mixed with good and bad news for the future of Georgia's economy. There is a lot of uncertainty surrounding regulations and how they will impact farmers, agribusinesses, rural communities and Georgia's overall economy," Dorfman said.

The 2020 Georgia Ag Forecast registration fee is \$25 per person and includes a meal. The series will be held in Macon, Gainesville, Bainbridge, Lyons and Tifton. For more information on the 2020 Georgia Ag Forecast series and to register, visit georgiaagforecast.com.

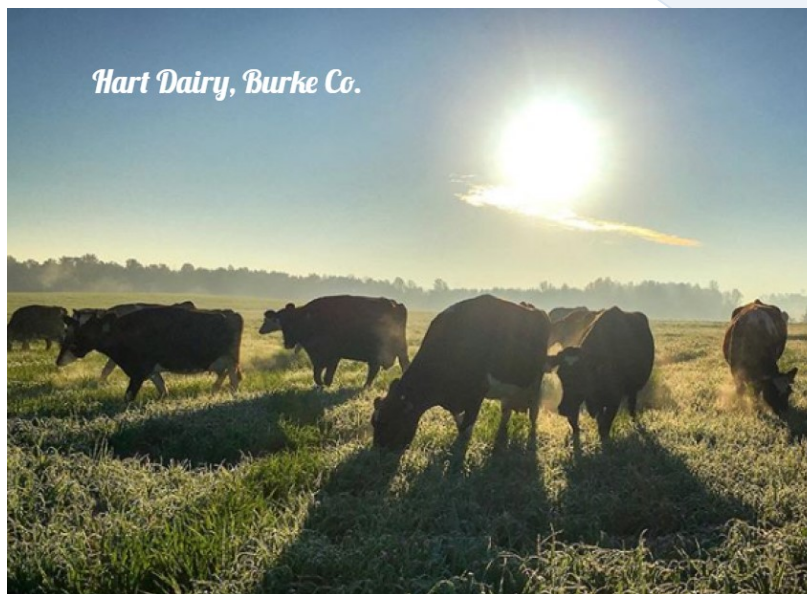
Source: UGA Extension



**THERE'S
STILL TIME**

**TO REGISTER FOR THE
GA DAIRY CONFERENCE!**

WWW.GADAIRYCONFERENCE.COM



THIS ISSUE

GA Ag Forecast Set for 5 Locations Next Month

GA Milk Producers to Host GA Dairy Conference

Ray Presented with GACAA Award

Research on Cotton Cake in Dairy Cattle Diets

Reserve Your Hotel Room for the 2020 GDC

Dixie Dairy Report

Georgia Milk Producers to Host Georgia Dairy Conference in January



Dairy farm families and industry leaders of the southeast dairy community will gather Jan. 20-22 for the 2020 Georgia Dairy Conference at the Savannah Riverfront Marriott in Savannah, Georgia.

This three-day event is known as the Southeast's premier dairy conference and allows producers to advance their knowledge, connect with producers and industry leaders, and discover new perspectives on issues that are important to the dairy industry.

With 81 dairies and over 100,000 cows represented at the 2019 GDC, the 2020 event will build on the success of previous years. The agenda features 14 speakers who will present topics ranging from milk quality management, robotic milking, financial management and retail marketing.

Veterinarians and animal nutritionists attending the 2020 Georgia Dairy Conference can earn continuing education credit hours. Registration and certificate of proof can be found at the registration table.

A tradeshow featuring industry sponsors and exhibitors is held in conjunction with the Conference and provides representatives with the opportunity to spark conversations with dairy producers. Last year, the GDC featured more than 80 exhibitor booths and will continue in growth this year.

Updates and announcements about the 2020 Georgia Dairy Conference are posted online at www.gadairyconference.com.



**GEORGIA MILK PRODUCERS
BOARD OF DIRECTORS**

Jason Martin, Bowersville
President - 678-233-8321
martindairy@gmail.com

Matt Johnson, Climax
Vice President - 229-220-1577
mattjohnson195@att.net

Adam Graft, Americus
Secretary - 229-942-0508
jgraft@bellsouth.net

Marvin Yoder, Montezuma
Treasurer - 478-472-4533
marvinpyoder@gmail.com

Steven Addis, Rocky Face
706-463-2303
stevenaddis01@gmail.com

Ed Coble, Waynesboro
706-554-3672
ltcoble@gmail.com

Chad Davis, Eatonton
706-318-0243
cwdavis22@gmail.com

Scott Glover, Clermont
770-539-4906
gcdairy@gmail.com

Charlie Lane, Monticello
706-468-6037
charlielane@bellsouth.net

Kenneth Murphy, Luthersville
770-927-9210
Udderspecialist@aol.com

Calvin Moody, Valdosta
229-263-2369
moodybcd@aol.com

Jeff Smith, Comer
706-338-2746
milkman17@windstream.net

Everett Williams, Madison
706-818-0311
e@wdairy.net

James Yoder, East Dublin
478-304-2857
jtyoderclan@gmail.com

Troy Yoder, Montezuma
478-244-2172
tramildaholsteins@gmail.com

Ray Presented with the Dairy Education Award at GACAA

Written by Jay Moon, Morgan Co. Extension Office



Lucy Ray, Morgan County Agriculture and Natural Resources Agent and County Extension Coordinator was recently awarded the Dairy Education Award during the Georgia Association of County Agricultural Agents (GACAA) annual conference. Ms. Ray received the Dairy Education award because of her educational programming for Morgan and surrounding counties. Ms. Ray plays an integral role in one of the state's last local dairy associations for producers. The Morgan County Dairy Association is a producer funded and producer operated association aimed at bringing dairy producers together and is able to tailor monthly meetings to the current issues at hand. Ms. Ray along with the

help of the Association's President and any other member invite speakers, businesses, and UGA Extension Specialists to present programs that are beneficial to local dairy producers. Ms. Ray's willingness to be a part of the Morgan County Dairy Association and help to keep the association moving forward is much appreciated by local producer members. Ms. Ray was also awarded with this award in 2014 by GACAA.

The Georgia Association of County Agricultural Agents annual conference was held in Dublin, Georgia on November 4th – 6th. Many awards are presented to agricultural extension agents who excel in different programming areas. This year the GACAA Dairy Education Award was sponsored by Southeast Milk, Inc. Ms. Ray was presented with an engraved ceramic milk bottle for her accomplishment.

UGA researcher uses 'cotton cake' as protein supplement in dairy cattle diets

By Maria Sellers for CAES News, UGA

John Bernard, a professor and dairy scientist at the University of Georgia Tifton campus, has found "cotton cake" to be an effective protein supplement for dairy cattle.

Cotton cake is a type of cottonseed meal, the solid material that remains after oil is extracted from cottonseed and is made from products that would otherwise be wasted. The cotton cake Bernard has formulated is composed of a slightly different nutrient makeup than the raw material.



Bernard discovered that cotton cake provides dairy cattle with an alternate source of protein than the commonly used soybean meal.

"We really have to watch how much fat we put in their diets, so when they can get the extruder fine-tuned to reduce the oil content in the cotton cake, it makes that product better for feeding cattle," he said.

Bernard conducted a feeding trial in lactating dairy cattle on the UGA Tifton campus that compared three different diets. One diet used all soybean and heat-treated soybean meal products. In the others, Bernard replaced either the soybean product or the heat-treated soybean meal with cotton cake. In every diet tested, cattle produced comparable amounts of milk with similar composition.

"The bottom line is, this product could very easily be used in a diet to replace some of the soybean meal, whether it's regular soybean meal or heat-treated soybean meal product," said Bernard.

Cattle farmers are not the only beneficiaries of this product; cotton growers are too. To read more about cotton research at UGA's College of Agricultural and Environmental Sciences, go to www.ugacotton.com.



Make Your Reservation for the Savannah by Dec. 30

Take advantage of special room rates for the 2020 Georgia Dairy Conference before Monday, Dec. 30!

The Savannah Riverfront Marriott is offering room rates for those attending the 2020 Georgia Dairy Conference from Wednesday, January 15, until Thursday, January 23, at \$132.00/room for single and double occupancy rooms. There

will be a \$8 parking fee per day for our group at the hotel.

Individuals are requested to call the hotel at 912-233-7722 or 800-285-0398 for reservations or follow a link our conference web-site at <http://www.gadairyconference.com/accommodations>. Please mention that you are with the “2020 Georgia Dairy Conference” when making your reservation to ensure that you receive the discounted room rate.

PLEASE NOTE: Any reservation received after the cut-off date will be accepted on a space and rate-available basis. Availability and pricing cannot be guaranteed after the cut-off date.

GEORGIA DAIRY PRODUCERS: Georgia Milk Producers will deduct \$100/night for **two nights** from each Georgia dairy farm’s hotel bill at checkout. It’s our way to show our appreciation for your support and to encourage you to attend your annual dairy conference! Registration for the conference is also free for Georgia farmers and their families. Please register online at <http://www.gadairyconference.com/registration> or call our office at 706-310-0020.

CONTINUING EDUCATION HOURS: Certified waste operators can receive one (1) certified waste operator continuing education credit (CEU) hour during the Georgia Dairy Conference. To obtain your attendance certificate, you must attend Dr. Deanne Meyer’s presentation, titled “Managing Dairy Manure in the Central Valley of California” on Tuesday, January 21 at 8:00 a.m. Veterinary (5 hours) and ARPAS (10 hours) CEUs are also available for those interested, registration for these CEUs will be available at the GDC registration desk.

DAIRY SPOUSES EVENT: This year, our spouses will fellowship over breakfast, then participate in a DIY Cheese Board Workshop hosted by Brooke Saye of More Cheese Please. The class will include all of the supplies and ingredients to craft your very own take-home (or enjoy there) cheeseboard spread. Saye will share techniques on how to build your board and will provide a take home cheat sheet that you can use to prepare your next charcuterie spread! Please let us know if you plan to participate at the registration table or by email at gamilkproducers@gmail.com!



Blend Prices and Looking Ahead to 2020

From Calvin Covington, December Dixie Dairy Report

Blend prices. November blend prices, in the Southeastern federal orders, are projected about \$0.50/cwt. higher than October in the three southeastern federal orders. December blend prices are projected to be \$0.50 to \$0.75/cwt. higher than November. Due to the change in the Class I Mover calculation, Southeast dairy farmers will not see all of the recent cheese prices gains in upcoming milk checks. In parts of the Appalachian and Southeast orders, the November Class III price will be higher than the order blend price.

PROJECTED* BLEND PRICES – Base Zones – SOUTHEASTERN FEDERAL ORDERS

Month	Appalachian	Florida (\$/cwt. at 3.5% butterfat)	Southeast
October 2019	\$20.17	\$22.00	\$20.65
November	\$20.58	\$22.54	\$21.17
December	\$21.07	\$23.34	\$21.74
January 2020	\$20.91	\$22.97	\$21.40
February	\$20.66	\$22.89	\$21.34
March	\$20.13	\$22.43	\$20.68

*Projections in bold

Looking ahead to 2020. Our projections show blend prices in the three Southeastern federal orders averaging about \$1.25/cwt. higher in 2020 compared to 2019. However, two factors can easily change the projection. They are production and sales. There is concern higher milk prices will spur on more milk production. Hopefully, dairy farmers will think twice before expanding, remembering the consequences of too much milk. On the sales side, domestic demand is enjoying a good year. We are optimistic this will continue as the economy remains strong. On the export side, powder exports are moving up. And, whey exports should improve next year as Asia rebuilds its swine population. Overall, we are optimistic for higher milk prices in 2020.

Dixie Dairy Report – December 2019

Calvin Covington

Cheese at its highest price in five years. For the first time since 2014, the monthly cheese price, used to set federal order prices, is over \$2.00/lb. The November cheese price is \$2.1723/lb. which is over \$0.70/lb. higher than last November. Barrel cheddar propelled the higher cheese price by increasing almost \$0.40/lb. from October to November. After being \$0.22/lb. lower than blocks in October, barrels were \$0.13/lb. higher than blocks in November. The high cheese price resulted in a November Class III price of \$20.45/cwt., again, the highest price, since 2014. Higher cheese prices are the result of: 1) Lower inventories. Since May, American cheese inventories have been below the same month a year ago with the October 31 inventory 9% lower than last October. 2) Strong demand. In October domestic cheese consumption was 3.4% and exports 11.6% higher than last October. 3) Lower production. October American cheese production was 3.2% lower than last October. Looking ahead, cheese prices are retreating, but still much higher than a year ago. As of December 4, CME block cheddar and barrel are \$1.9750/lb. and \$2.2525/lb. respectively. Cheese prices are anticipated to decline from current levels, as production increases, but prices are projected to remain significantly higher than a year earlier through the first half of 2020.

The price of nonfat dry milk powder (NFDM) keeps climbing. The November NFDM price is \$1.1540/lb., the highest since 2014. Factors propelling high powder prices are: 1) Increased exports. The volume of milk powder exported in September was a record for any September. 2) Strong domestic use of powder by bakers and confectioners. 3) Increased use of powder and wet solids for cheese milk standardization. Currently, the domestic NFDM price is about \$0.20/lb. lower than the world price. The NFDM price is projected to continue to move upward in 2020, and will be a primary reason for higher milk prices next year.

The butter price is dropping. Since July, the butter price has declined every month with the November CME butter price the lowest in three years. Reasons for the decline include: 1) Increased butter production. Production up 5% in October. 2) Expanding inventories. Inventories have increased each month since July. 3) Heavy butter imports, and lower world prices continue to put downward pressure on the domestic butter price. Butter prices are projected lower in 2020, compared to recent years.

DAIRY PRODUCTS SALES REPORT (DPSR) PRICES *

Product	November 2019	October 2019	November 2018	November 2017
			(\$/lb.)	
Butter	\$2.0869	\$2.1599	\$2.2677	\$2.2810
Cheese (block)	\$2.0987	\$2.0569	\$1.5246	\$1.7475
Cheese (barrel)	\$2.2280	\$1.8379	\$1.3433	\$1.7450
Cheese weighted avg.	\$2.1723	\$1.9694	\$1.4463	\$1.7617
Nonfat Dry Milk Powder	\$1.1540	\$1.0957	\$0.8860	\$0.7553
Dry Whey	\$0.3071	\$0.3396	\$0.4626	\$0.3587

*Dairy product prices used to calculate federal order class prices

SOUTHEAST MONTHLY MILK REPORTING STATES *- October to October

	Georgia	Florida	Virginia	Total
(Production)		(million lbs.)		
October 2019	136	172	119	427
October 2018	135	170	128	433
Change %	0.8%	1.2%	-7.0%	-1.4%

*These three states produce about two-thirds of the milk in the Southeast.

More milk and cows. For the fourth consecutive month, milk production is higher than a year earlier. October production is 1.3% higher than last October. Of the 24 milk reporting states production was higher in 17 and lower in 7 states. Texas contin-

ues as the production leader, up 9.3%. October production was 2.8% higher in California and up 1.0% in Wisconsin. Estimated cow numbers at the end of October were 9.327 million head. Cow numbers have increased 10,000 head over the past two months.

RETURN SERVICE REQUESTED

Watkinsville, GA 30677
Suite 5
1641 New Shoals Road
Georgia Milk Producers, Inc.